



CLETA

AS YOU GROW, WE GROW



CONTENTS

- CEO'S MESSAGE
- CEO HISTORY
- CLETA'S CORPORATE IDENTITY
- CLETA'S BUSINESS CATEGORY
- CLETA'S DIFFERENCE



CEO's MESSAGE

Greetings!

Thank you for taking the time to read about our company and our vision. In 1999, I started my career as a formulation chemist. For the next 19 years, I was fortunate to have worked in every step of the contract manufacturer's process, from production, quality, regulatory, purchasing, plant planning and design, to running plants for USA and Korean companies, I can confidently say I know what to do, when to do it, and how to do it.

I founded CLETA on the foundations of the following assets I've gained through this adventurous journey. They are my technical expertise, formidable and tested experience, and most importantly the everlasting friendships I've made along the way.

Throughout my career, I've often seen the difficulties many organizations face in navigating to find the right partners, suppliers, and planners for their needs. Much too often, time and resources are lost as a result of looking in the wrong places for their solution. With CLETA's extensive network and years of experience, we can confidently assure our customers, your search is done. Our friends are now your friends, and we guarantee the best quality, honest pricing, and our genuine partnership.

Our network of suppliers and partners are the best in the industry, and our relationship with them extends this guarantees for you. It is my sincere hope to build a better experience for all of our customers, as they pursue the best for their organization and their customers.

It is my personal goal to ensure success for our customers to become a trusted partner that grows with you.

Our motto, "AS YOU GROW, WE GROW" is our belief and the reason you can be confident to work with us at CLETA.

Thank you so much, and I look forward to our journey together.
Sincerely,

Ken Park
Founder/CEO
CLETA LLC



CEO HISTORY



- **CLETA LLC** Norwood, NJ JUL 2017
CEO
- **Englewood LAB** Englewood, NJ JUL 2016 – JUL 2017
Senior Director of Operation
 - Planned and completed major expansion to add powder filling facility at the original site
 - Built 2nd location manufacturing plant for Skin Care filling and Packing area and Color Cosmetic filling & Packing area. Facility size: 155,000sq in Totowa, NJ
 - Designed Production lay out and Engineering Utility Capacity based on Production equipment demand
 - Established Color Cosmetic Business: Budget (Construction and Equipment), Production Design and Planning, and staffing plan
- **COSMAX USA** Solon, OH SEP 2013 – MAR 2016
Director of Operations
 - Planned and completed establishment of Powder factory, Lip/Mascara factory and Skin Care factory Facility size: 335,000sq in Solon, OH
 - Led engineering and designing of each factory (designed H2 Area: explosion facility for powder factory)
 - Managed and coordinated construction vendors (General contractor, Electric, HVAC, Chiller, Steam, Air, Sprinkler, etc)
 - Configured existing ERP program to fit U.S market.
 - Purchased, installed, and successfully tested all processing equipment (Skin care mixer, lip stick mixer, Mascara Mixer, Henschel mixer, Atomizer, Ribbon mixer, Sieving mixer) and filling equipment (Lip stick filler, Lip Gloss filler, Pen eyeliner, Mascara filler, Hot Pour filler, traditional type pressed powder machine, wet type pressed machine, multi pressed machine, Jelly Dome type machine)
 - Set Up RO system (installed with USP standard, passed validation) & QC Laboratory facility
 - Established QA/QC, Purchasing team (Certified ISO 22716, Certified Cosmetic GMP)
 - Managed Daily/Weekly/Monthly production schedule, Conducted and managed production result analysis.
 - Managed and planned capacity requirements, Prepared Customer Audits/ Mitigated audit results (corrective action plan)
 - Reviewed production capabilities in regards to tooling/equipment, and conducted ROI analysis for procurement of new equipment for new products.
 - Completed all line set up (focused area in Lip stick (Hot pour product), Powder and skin care assembly)
- **Englewood LAB** Englewood, NJ 2012-2013 Aug MAY 2012 – AUG 2013
Director of Operation
 - Directed all departments of operation to include: Customer service, Costing, Purchasing, IT, Manufacturing, Assembly, Inventory Control & Warehouse*Director of Production* JAN 2008 – APR 2012
 - Directed a staff of 80+ employees in the areas of batching, filling, component purchasing (overseas), warehousing, inventory control and information technology.*Director of R&I* JAN 2007 – DEC 2007
 - Managed staff of 7+ in the R&I with new product development and formulations of cosmetic skincare and OTC products
 - Ensured formulation and preparation for laboratory batches in compliance with cGMP, quality and regulatory

● **Altwell** Dae Jeon, Korea

MAR 2002 – DEC 2006

Senior Chemist

- Formulated for new product (Skin Care) and conducted stability testing
- Established reliable scale-up process (laboratory to production)
- Effectively communicated manufacturing procedure and trained compounders to analyze batch size, kettle size, proper equipment, to maintain efficiency and follow GMP procedures

● **COSMAX Korea** Hyang Nam, Korea

JULY 1999 – FEB 2002

Chemist

- Developed emulsion products; lotion, cream and sun cream (OTC), mask products
- Developed 30+ products per year

• **EDUCATION** **MS**, Pharmaceutical Sciences, Chung Nam University, Dae-Jeon, Korea

• **TRAINING** 2003 COSMETIC CHEMIST TECHNICAL TRAINING IN JAPAN

- Nikko Chemical in Tokyo (Study and train for Synthetic raw material, analysis ingredients, formulating, testing stability know-how)
- Kanebo, Toshiki pigment, Cosme techno (focus Color cosmetic training-dispersion pigment, formulate pressed powder product)

• **PATENTS & PUBLICATION**

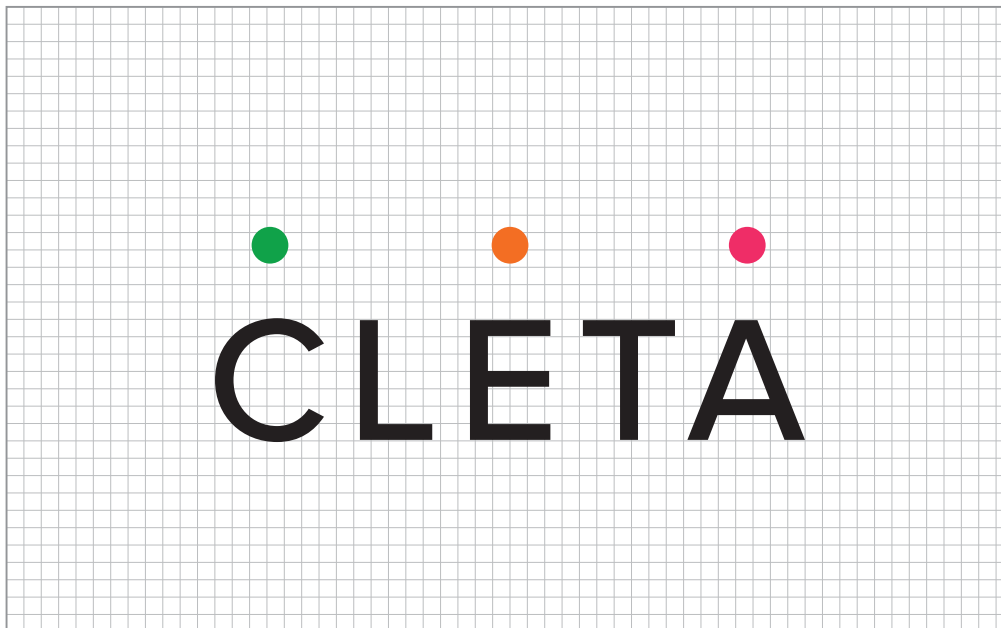
- Manufacturing method for Nano Emulsion containing Arbutin (Patent# 10-0501309)
- Develop for Whitening cosmetic containing Natural Plant Extract (Patent# 10-0422419)
- Manufacturing method for Skin Protect cream containing Natural Ceramide, Phyto-sphingosine, Cholesterol and Lecithin (Patent# 10-0452757)
- Study on the in vitro SPF effect of nanosuspensions prepared using bead mill and high pressure homogenizer (2006, The Pharmaceutical society of Korea)

CLETA's CORPORATE IDENTITY

CLETA is a Greek Goddess, worshipped by the Spartans for her beauty and strength. The name represents our company's strengths in our expertise and network in the beauty industry. Our motto "AS YOU GROW, WE GROW" represents our belief behind our company and expresses our confidence in becoming an enduring partner for you and your company. In everything we do, we have you and your company's success in mind.



* The Company logo uses four colors to represent the four cornerstones of our business.



COMPONENTS

Exceptional Quality, Competitive Cost, Reliable Speed.



RAW MATERIALS

Globally Sourced. Competitively Priced. Expertly Delivered.



EQUIPMENT

Suitable Design – ideal equipment for production needs. Proper Assessment and Follow-up.



FINISHED GOOD SERVICE

Clear Communication. Diverse Manufacturers
Guaranteed Quality.

CLETA's BUSINESS CATEGORY

01
COMPONENTS

02
RAW
MATERIALS

03
EQUIPMENT

04
FINISHED
GOOD
SERVICE





1) COMPONENTS

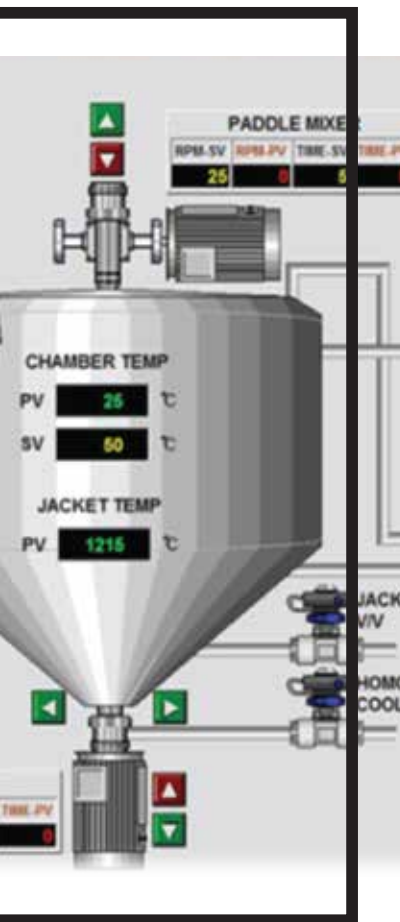
CLETA is partnered with the best and the most comprehensive network of suppliers in all categories of components. Some of CLETA's offerings include, but are not limited to Airless bottles, jars, blower bottles, tubes, aluminum pans, and brushes. We guarantee the highest levels of attention to detail, quality, and the most competitive pricing.

						
Bottle/Pump Bottle	Heavy Blow	Airless Bottle	Jar	Dual Airless	Lipgloss	Lipstick
						
Aluminum Pan	Compact	Airless Compact	Palette	Mascara	Stick Concealer	Puff

2) RAW MATERIALS

With dependable points of sourcing and distribution located in Korea and USA, CLETA has access to raw materials across Asia and North America, with the most competitive pricing and lead time. CLETA has contracted with numerous suppliers across the globe, allowing us to compare regional cost differences to provide the highest cost savings to our customers.





3) EQUIPMENT

CLETA services some of the largest contract manufacturers in North and South America. Our specialties include the following types equipment.

- Powder Mixers and Pressed Powder equipment
Henschel Mixer, Pulverizer, Ribbon Mixer, Sieving Machine, Pressed (Multi Color) Machine, Wet type Press Machine
- Lip Stick & Mascara Filling machine
- Vacuum Homogenizer Mixers

Henschel Mixer



Henschel Mixer



Pulverizer



Vacuum Homo Mixer



Vacuum Homo Mixer





4) FINISHED GOOD SERVICE

CLETA's trusted partnership with contract manufacturers in both Korea and the USA allows us to offer the best manufacturers to our clients. We are focused in finding the most fitting manufacturers for our customers. Our services include product development, branding, formulating, manufacturing, logistics, and regulatory assistance to help our clients successfully launch their products in to the market space.

We also provide consultation services for cosmetic regulatory, factory management, product manufacturing, permits and audits.

With our extensive experience in running Global Contract Manufacturers, CLETA is able to provide applicable consulting and know-hows in production, production management, purchasing, inventory management, quality assurance, employee management, etc. Our team has successfully completed several FDA audits and can provide regulatory guidelines as well. In addition, we provide consultation to streamline production, save costs and expand your manufacturing business by reviewing production layouts, maximizing utility engineering, and acquiring specific licensure/certificates.

“ THE DIFFERENCE ” What sets us apart from the competition?

● Service (Communication)

We believe communication is key to a successful relationship with our clients. We promise to stay in close communication through all phases of development, purchase order, production, shipment, and follow up upon delivery. Our goal is complete satisfaction of our customers through clear and continued communication.

● Vendor

CLETA has partnered with top vendors in each categories of services. Our goal is to create a central location to gain access to all the top vendors in the industry. As a result, we are able to guarantee the highest quality products at the most competitive pricing. Through the true partnership CLETA has established, we are able to offer the same promises to our customers.

● Minimum Order Quantity

We are able to work with the smallest MOQs in the industry.
We want to grow with your company and be the platform that you can rely on through your growth.

● Speed

Due to CLETA's experience and expertise in Cosmetic Project Management, our team will prevent most prevalent issues often missed in contract manufacturing. Furthermore, when inevitable obstacles do arise, we are quick to identify and correct the concerns at the source, resulting in timely and permanent solutions.

● Minimal Tooling Cost and Zero Development Fees

We believe risk taking is part of mutual respect for our clients, and are committed to ensuring your success by investing ourselves in to your business. Through competitive pricing and high standards of quality, we want to see our customers grow that lead to re-orders and continued patronage. Due to our vendors being the highest rated partners in the industry, they are equipped to handle much of the development in-house, off-setting this cost from our customers. Also, because of the variety and diversity of our vendors, with extremely exceptional cases, tooling costs are minimal.

● Delivery

We have confidence in our suppliers and we promise to extend this confidence to our customers. We stand by our promise by guaranteeing to accept air-shipment fees as a result of delays caused by our team or our partners.

● Pricing

Components -When the design and the materials are the same, we promise to beat any competitor's pricing. Raw Materials - We source globally to provide you the most competitive pricing. Finished Goods – Not only do we have access to the best in the business, we source directly from the manufacturers to minimize cost to our customers.

